

Mouse Monoclonal Antibody to GSTP1

Order Information

Catalog#	20099		
Size/Concentration	100µl	50µl	20µl
Price(¥)	2180	1280	650

Description

GSTP1 (glutathione-S-transferase, pi 1), also called GST3/DFN7, is a family of enzymes that play an important role in detoxification by catalyzing the conjugation of many hydrophobic and electrophilic compounds with reduced glutathione. GSTP1 act like a tumor suppressor gene, which when inactivated leads to tumor growth, and the -class glutathione S-transferase is commonly inactivated by somatic CpGisland hypermethylation in cancers of the prostate, liver, and breast. Methylation of regulatory sequences at the GSTP1 gene locus is found in the vast majority (>90%) of prostate carcinomas and is associated with transcriptional down-regulation.

Specification

Aliases :	PI; DFN7; GST3; FAEES3
Entrez GeneID :	2950
Swissprot :	P09211
clone :	3F2C2
WB Predicted band size :	23kDa
Host/Isotype :	Mouse IgG1
Antibody Type :	Primary antibody
Storage :	Store at 4°C short term. Aliquot and store at -20°C long term. Avoid freeze/thaw cycles.
Species Reactivity :	Human
Immunogen :	Purified recombinant fragment of human GSTP1 expressed in E. Coli.
Formulation :	Purified antibody in PBS with 0.05% sodium azide.

Application

WB	1/500 - 1/2000
IHC	1/200 - 1/1000
IF	1/200 - 1/1000
FCM	1/200 - 1/400
ELISA	1/10000

References

1. Kimihiko Satoh, Ken Itoh, Masayuki Yamamoto. 2002. Carcinogenesis. 23: 457 - 462.
2. Xiaohui Lin, William G. Nelson. 2003. Cancer Research. 63: 498-504.

Call 1-510-860-4615
+86-19375157864
Email Info@ProMab.com
Web www.ProMab.com
www.ProMab.cn

Protocol

WB - www.promab.com/protocol/wb.html
IHC - www.promab.com/protocol/ihc.html
IF - www.promab.com/protocol/if.html
FCM - www.promab.com/protocol/fcm.html
Antigen Sequence is available upon request.

Products and Services

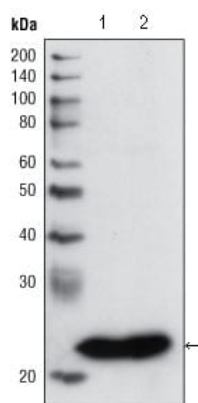
- Mouse Monoclonal Antibody
- Rat Monoclonal Antibody
- Human Antibody
- Hybridoma Sequencing
- Polyclonal Antibody

For Research Only

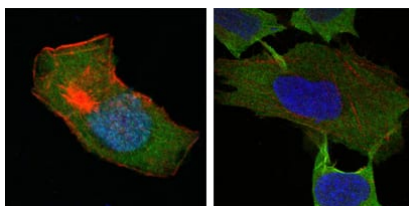
Application Key:WB - Western Blot | IHC - Immunohistochemistry | ICC - Immunocytochemistry | FCM - Flow Cytometry | ELISA - Enzyme-linked Immunosorbent Assay | IP - Immunoprecipitation

#20099

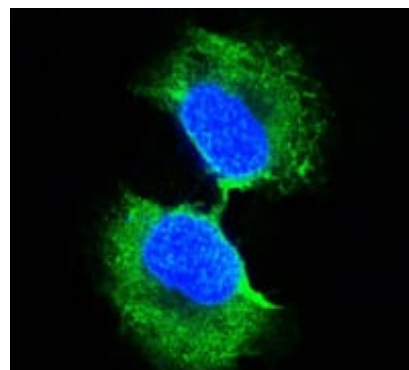
Mouse Monoclonal Antibody to GSTP1



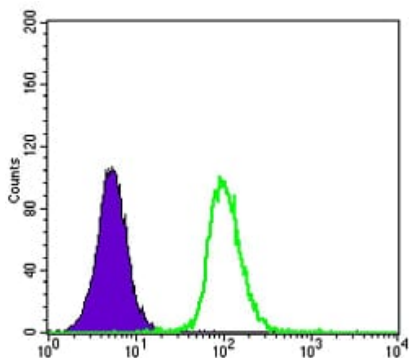
Western blot analysis using GSTP1 mouse mAb against PC3 cell lysate (1) and human cerebellum tissue lysate (2).



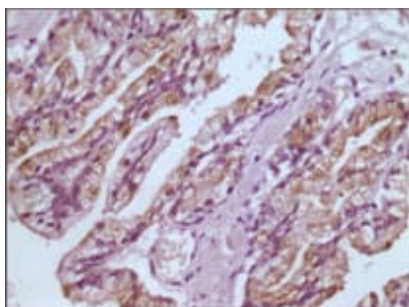
Confocal Immunofluorescence analysis of HepG2 (left) and L-02 (right) cells using GSTP1 mouse mAb (green). Red: Actin filaments have been labeled with DY-554 phalloidin. Blue: DRAQ5 fluorescent DNA dye.



Confocal Immunofluorescence analysis of PC-3 cells using GSTP1 mouse mAb (green). Blue: DRAQ5 fluorescent DNA dye.



Flow cytometric analysis of K562 cells using GSTP1 mouse mAb (green) and negative control (purple).



Immunohistochemical analysis of paraffin-embedded human prostate tissues using GSTP1 mouse mAb with DAB staining.

For Research Only

Application Key: WB - Western Blot | IHC - Immunohistochemistry | ICC - Immunocytochemistry | FCM - Flow Cytometry | ELISA - Enzyme-linked Immunosorbent Assay | IP - Immunoprecipitation

#20099