

Rabbit Polyclonal Antibody to BRD9

Order Information

| | | | |
|--------------------|--------|------|------|
| Catalog# | P09368 | | |
| Size/Concentration | 100µl | 50µl | 20µl |
| Price(¥) | 1980 | 1180 | 650 |

Description

Enables lysine-acetylated histone binding activity. Predicted to be involved in regulation of transcription by RNA polymerase II. Located in nucleoplasm. Part of SWI/SNF complex.

Specification

| | |
|------------------------|--|
| Aliases | : PRO9856; SMARCI2; LAVS3040 |
| Swissprot | : Q9H8M2 |
| WB Predicted band size | : 67 kDa |
| Host/Isotype | : Rabbit IgG |
| Antibody Type | : Primary antibody |
| Storage | : Store at 4°C short term. Aliquot and store at -20°C long term. Avoid freeze/thaw cycles. |
| Species Reactivity | : Human, Mouse |
| Immunogen | : Fusion protein of human BRD9 |
| Formulation | : Purified antibody in PBS with 0.05% sodium azide and 50% glycerol. |

Application

| | |
|-------|----------------|
| WB | 1/1000-1/5000 |
| IHC | 1/50-1/200 |
| ELISA | 1/5000-1/10000 |

Call 1-510-860-4615
+86-19375157864
Email Info@ProMab.com
Web www.ProMab.com
www.ProMab.cn

Protocol

WB - www.promab.com/protocol/wb.html
IHC - www.promab.com/protocol/ihc.html
IF - www.promab.com/protocol/if.html
FCM - www.promab.com/protocol/fcm.html
Antigen Sequence is available upon request.

Products and Services

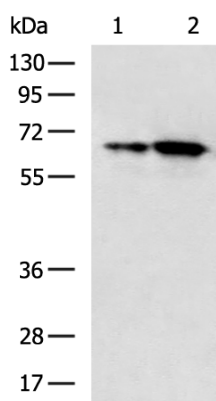
- Mouse Monoclonal Antibody
- Rat Monoclonal Antibody
- Human Antibody
- Hybridoma Sequencing
- Polyclonal Antibody

For Research Only

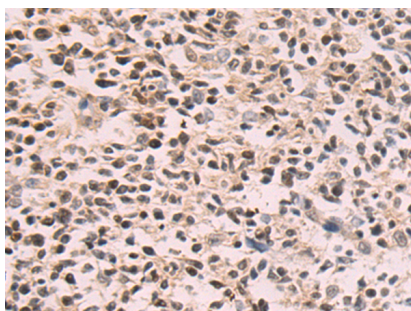
Application Key: WB - Western Blot | IHC - Immunohistochemistry | ICC - Immunocytochemistry | FCM - Flow Cytometry | ELISA - Enzyme-linked Immunosorbent Assay | IP - Immunoprecipitation

#P09368

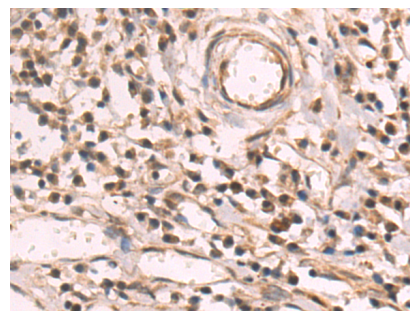
Rabbit Polyclonal Antibody to BRD9



Gel: 8%SDS-PAGE, Lysate: 40 μ g, Lane 1-2: LNCAP and K562 cell lysates, Primary antibody: P09368(BRD9 Antibody) at dilution 1/800, Secondary antibody: Goat anti rabbit IgG at 1/5000 dilution, Exposure time: 1 minute



The image is immunohistochemistry of paraffin-embedded Human tonsil tissue using P09368(BRD9 Antibody) at dilution 1/55. (Original magnification: $\times 200$)



The image is immunohistochemistry of paraffin-embedded Human esophagus cancer tissue using P09368(BRD9 Antibody) at dilution 1/55. (Original magnification: $\times 200$)

For Research Only

Application Key: WB - Western Blot | IHC - Immunohistochemistry | ICC - Immunocytochemistry | FCM - Flow Cytometry | ELISA - Enzyme-linked Immunosorbent Assay | IP - Immunoprecipitation

#P09368